

Water usage

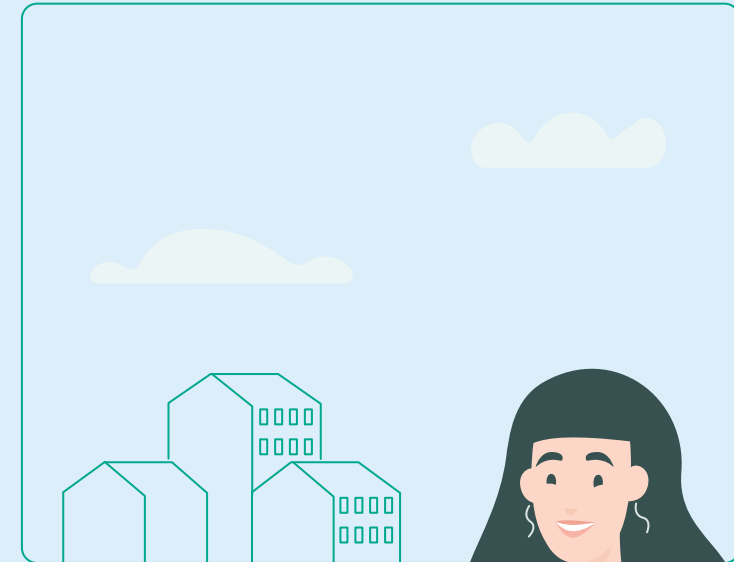
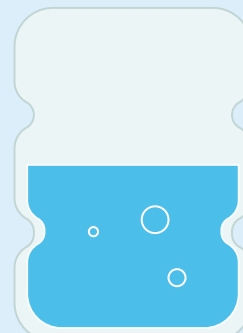
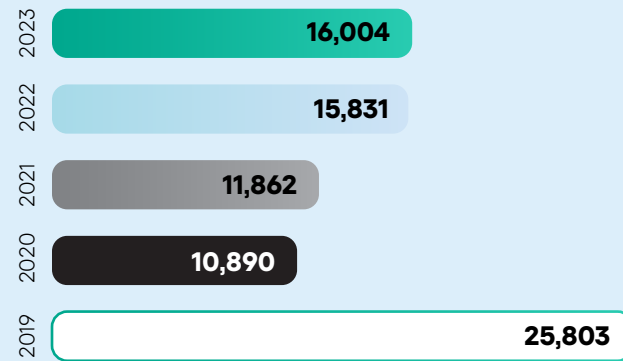
We are improving the water supply system in our offices in an effort to reduce water consumption.

GRI 303-1 GRI 303-2 GRI 303-3 GRI 303-4 GRI 303-5 TC-SI-130-a.2

Kaspersky utilizes water only for office and data center support needs, and solely from municipal sources. The Company does not receive any water from natural sources or open water bodies and does not discharge water into any natural reservoirs.

In 2022 and 2023, the Company saw its water consumption increase compared with the previous two years. This increase can be attributed to the transition of employees from remote work mainly in 2020 and 2021 to a gradual return to the office in the subsequent two years, alongside the reopening of the office's cafeteria, gym, and restaurant facilities. All of these factors impacted the increase in water consumption. Water consumption levels for 2022 and 2023 were substantially lower than the 2019 baseline level, due to the installation of new water supply system sensors.

Water consumption¹, m³



¹ Data provided for Kaspersky's Moscow office, which includes the Company's data center (its main source of water consumption). Information was not collected for other offices during the reporting period. In terms of business operations, the Company uses water for utility purposes at its offices and thus conducts general calculations of its water consumption. The sites where the Company's offices are located are not areas with water stress.